

Get People Walking:
Creative Ideas for Main Streets
August 29, 2024



Main Street
Rhode Island
PRESENTED BY
GROW SMART RI



Rhode Island Energy™
a PPL company



Main Street America & The 4 Points Main Street Approach



Why “walking”?

- Natural, free, no equipment needed
- Proven health benefits
- Mental health & stress
- No emissions, less traffic & parking
- More customers for local businesses
- Value per acre higher
- Eyes on the Street (safety)
- *People like being around other people*



What is walkable?

- Safe from vehicle traffic & crime
- Wide, smooth & well-maintained sidewalks
- Crosswalks & ADA accessible curbs
- Seating
- Shade (trees!) & lighting
- Attractive & clean
- Clear wayfinding
- Interesting & surprising (to keep going)



Walking Incentives

Guided tours

Festivals

Open streets

Passports/hunts

Plantings

Walking clubs

Windows

Sidewalk displays

Signs & maps

Banners

Self tours

Marked routes

Murals

Sculptures

Painted anything

Historical markers

Playfulness

Interactives





RI Slave History Medallions



NEW **2024**

 RI Slave History Medallions is proud to present:

NEWPORT BLACK HISTORY WALKING TOURS:

Lost Stories of Resistance & Freedom

Saturdays, Sundays & Mondays
from June 22 - November 30, 2024
10:00 am - 11:15 am

**WE CARRY OUR HISTORY WITH US.
YOU ARE YOUR HISTORY.**
~ James Baldwin

- Walk in the footsteps of Colonial Black Americans and learn about their lives.
- Expert tour guides will share lesser known stories of enslaved and freed Blacks in Newport, bringing their vital contributions and legacies to life.

Meet near the Bowen's Wharf Pilot House ~
Tour Historic Hill to Washington Square.



BOOK YOUR TOUR HERE  

OR HERE  www.rishm.org

 **NEWPORT BLACK HISTORY WALKING TOURS**

Or purchase in person on tour dates near the Bowen's Wharf Pilot House

These events have been made possible by a grant from the RI Commerce Department.

Self Guided Tours

Walking Tour

CENTRAL FALLS, RI

"A City for all People"

[Intro](#)
[Walking Tour](#)
[Directions](#)



WATER POWERED!
BlackstoneHeritageCorridor.org

Walking Tour continued

2 Central Falls City Hall (1888)/ Jenks Park; Broad Street

This lovely Queen Anne style structure was built as the Lincoln High School in 1888. It became the Central Falls High School in 1895 and City Hall in 1927. It served as the corner stone of Central Falls' municipal center on Broad Street, along with the Fire Station (1889), the old Town Hall (1873), and the Police Station and Courthouse (1914).

Adjacent to City Hall is Jenks Park, which was established in 1890 on four acres of land donated by Alvin Jenks. Besides serving as the "lungs" of the city, the park features several highlights, including the "iron umbrella" pavilions

built by Fales and Jenks, a Central Falls Machine manufacturer. The centerpiece of the park though is the Cogswell Tower, which stands seventy feet high and has a clock face on each side. The tower is built upon Dexter's Ledge, the highest point in the city. You can see the entire city from the tower, as well as much of the valley from Providence to Woonsocket.

From City Hall continue south on Broad Street for 3 blocks. Turn right onto Cross Street into the South Central Falls Historic District. Turn right onto Evalene Street and right again onto Central Street.

3 South Central Falls Historic District

Some of the finest and most interesting houses in the city are located in the South Central Falls Historic District, which was listed on the National Register of Historic Places in 1991. Everything from Queen Anne mansions to triple-deckers can be seen here in the neighborhood that was home to both mill owners and mill workers. A detailed tour of the district, created by Historic Central Falls, is available at City Hall.

Turn right onto Dexter Street. Turn right onto Hunt Street then right onto High Street. Continue on High Street to Pierce Park which is on the left side.

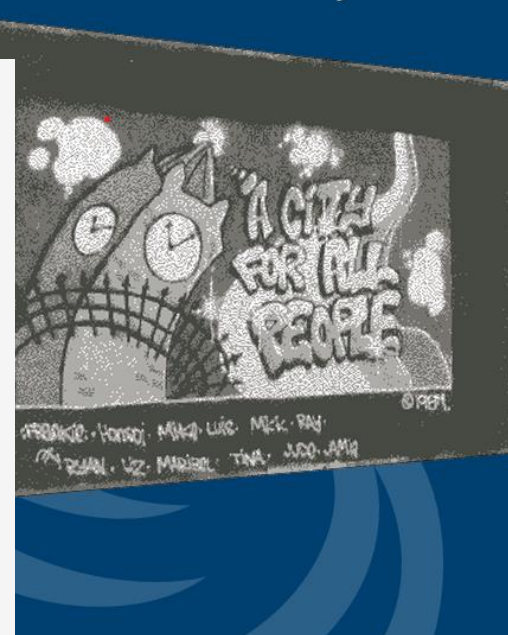


"Because of its ethnic diversity, Central Falls is an exciting place to be."



These tidy Greek-Revival houses from the 1840s are just one example of the mill worker housing that still exists in the South Central Falls Historic District.

"Using the best of all ethnic groups — that's what Central Falls is all about."





1 Trinity Repertory Company 201 Washington Street

The Tony Award-winning Trinity Repertory Company is one of the last resident acting companies in the U.S., performing in one of Providence's most historic venues. The former Emery Majestic Theater was opened by local vaudevillians in 1917. When movies became America's favorite form of entertainment, the Majestic became the premier theater downtown. However business slowed and its doors closed in the mid-20th century. The Majestic's history of live performance meant the building was a natural fit to house Providence's newly formed Trinity Repertory Company. Trinity Rep was founded in 1963 and is considered "one of the most respected regional theatres in the country."



2 Providence Public Library 150 Empire Street

Founded in 1875, the Providence Public Library (PPL) opened at its present Washington Street location in 1900, adding the Empire Street building in 1954. The first librarian, William Foster, stressed the library's important role in community service. This tradition continues as PPL remains dedicated to making the library and its resources accessible to all. PPL's services are still relevant today, from traditional lending, research and learning, to training programs in the latest technologies. PPL is focused on its role as a cultural and educational center, highlighting its unique and historical Rhode Island and Special Collections.

3 AS220 115 Empire Street

No organization embodies Providence's moniker, "The Creative Capital," more than AS220. Founded in 1985, AS220 began in one room above the Providence Performing Arts Center at 220 Weybosset Street and has since purchased, renovated, and now operates three mixed-used buildings. AS220 has been a major catalyst in reviving downtown Providence, founded on the belief in providing an "uninjured, uncensored" space for artistic expression. Today AS220 houses gallery spaces, a performance stage, a print shop, a darkroom, affordable live/work studios for artists, a bar and restaurant, and draws more than 51,000 people each year.



4 Beneficent Church 300 Weybosset Street

One of the oldest churches in Rhode Island, Beneficent Church was originally



8 Custom House 24 Weybosset Street

A historic symbol of industry and the role of the river in shaping the economy, the Custom House was completed in 1857. It was home to the Federal District Court, Post Office, IRS, Steamboat Inspection and U.S. Customs. The building, occupied by the Federal Government through 1989, was converted to office space for the State Court Systems in 1992 as the John E. Fogarty Judicial Complex. This building is the centerpiece of the Custom House Historic District, listed on the National Register of Historic Places, including eight additional buildings associated with the growth of Providence as a business center in the mid-to-late 19th century.

POINT OF INTEREST



The intersection of Westminster and Weybosset streets serves as an entryway to the commercial district of downtown. Walk to the intersection and look up at the landmark Turk's Head Building. In the early 19th century, shopkeeper Jacob Whitman mounted a ship's figurehead of an Ottoman above his business giving the building its name. The original was later replaced by a stone affigy.



9 Memorial Park South Main Street

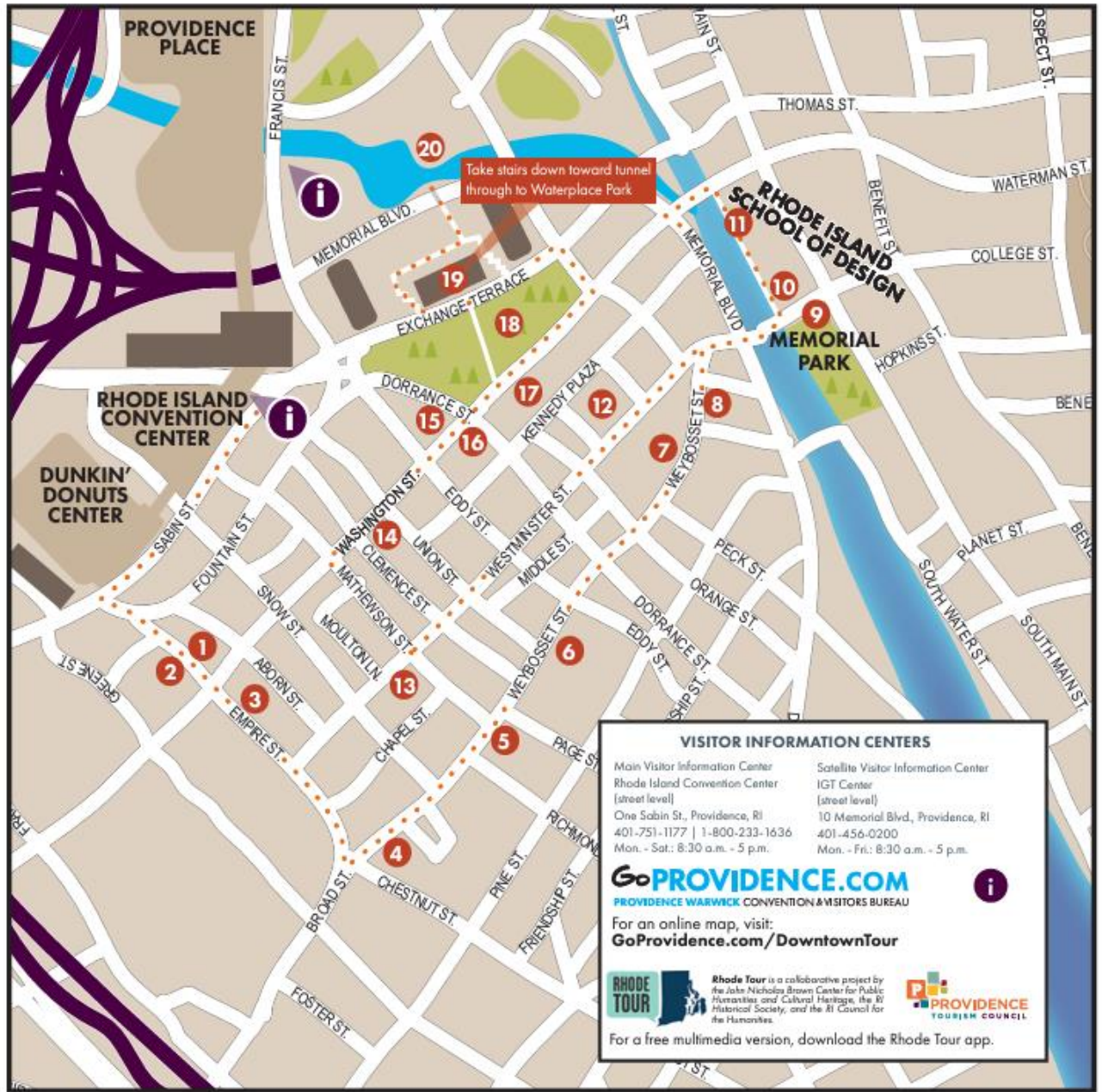
This sculpture-filled park pays homage to people who gave their lives during wars and conflicts around the world.

RI Holocaust Memorial - Created in 2015, the Rhode Island Holocaust Memorial pays tribute to "all that we have lost and all that we have learned" from the atrocities of World War II. The memorial was designed by RISD-based sculptor Jonathon Bonner and is composed of four parts: the Entrance Gate, the Path, the Life Stone and Memorial Columns. The memorial serves as a tribute for, and on behalf of, Rhode Island's remaining Holocaust survivors.

Korean War Memorial - The bronze statue speaks to the price of war and honors its veterans, depicting a kneeling soldier fighting off the rain and cold.

World War I & II Memorials - Standing 150 feet high, the World War I Memorial honors those who served in the First World War. The memorial was designed by architect Paul Cret and created in 1929. The memorial names specific battles Rhode Islanders fought in with the word "Peace" at the top of the tower. The World War II memorial was dedicated in 2007 and honors the generation of Rhode Islanders who fought in the Second World War.

10 Market House 27 Market Square



VISITOR INFORMATION CENTERS

Main Visitor Information Center Rhode Island Convention Center (street level) One Sabin St., Providence, RI 401-751-1177 1-800-233-1636 Mon. - Sat.: 8:30 a.m. - 5 p.m.	Satellite Visitor Information Center IGT Center (street level) 10 Memorial Blvd., Providence, RI 401-456-0200 Mon. - Fri.: 8:30 a.m. - 5 p.m.
--	--

GoPROVIDENCE.COM
PROVIDENCE WARWICK CONVENTION & VISITORS BUREAU

For an online map, visit:
GoProvidence.com/DowntownTour

RHODE TOUR Rhode Tour is a collaborative project by the Jake Nicholas Brown Center for Public Humanities and Cultural Heritage, the RI Historical Society, and the RI Council for the Humanities.

PROVIDENCE TOURISM COUNCIL

For a free multimedia version, download the Rhode Tour app.



**Community
Libraries**
of Providence

June 2024

MON
24

June 24 @ 5:30 pm - 6:30 pm WALKING CLUB

WALKING CLUB

South Providence Library - Outside 441 Prairie Avenue, Providence, RI, United

WALKING CLUB Walk for the appreciation of life. Everyone is welcome!!



ROCHAMBEAU WALKERS



The Empowerment Factory

inside the Hope Artiste Village

Indoor Winter Wellness Walk





PVD
FEST

TM

Downtown
September 6-7







BASTA

RISTORANTE

BASTA HAPPY HALLOWEEN

OUR AMERICAN DREAM
MADE POSSIBLE BY THEIRS

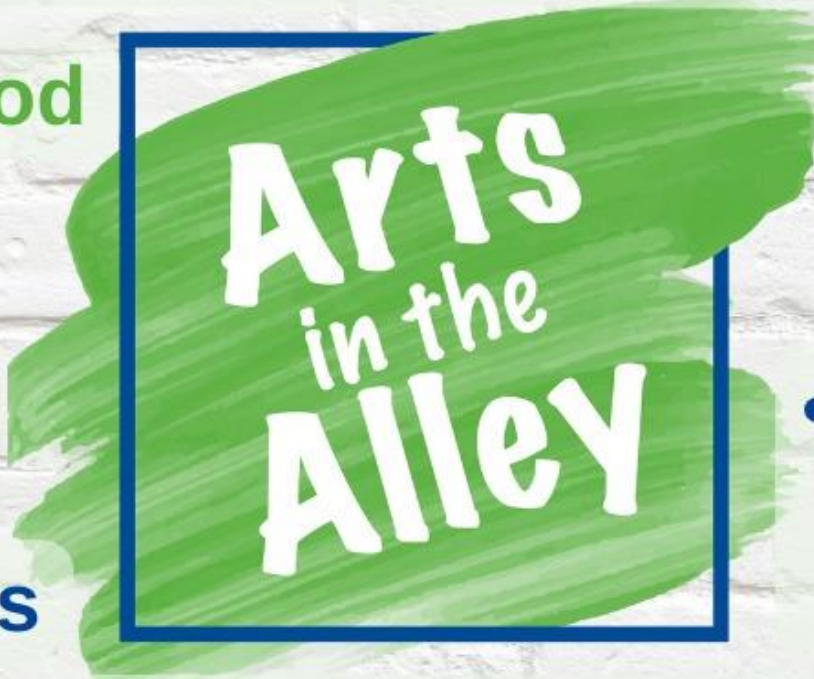
PIZZERIA - DOGGE



• Artists, Artisans, and Crafters

• W's Wood
Fired
Pizza

• Tarot
Card
Readings



• Live
Music

• Craft
Brews &
Seltzers

• DIY Printing with Riverzedge Arts



Saturday June 1, 1-5pm

Lops Brewing, 122 N Main St,
Woonsocket



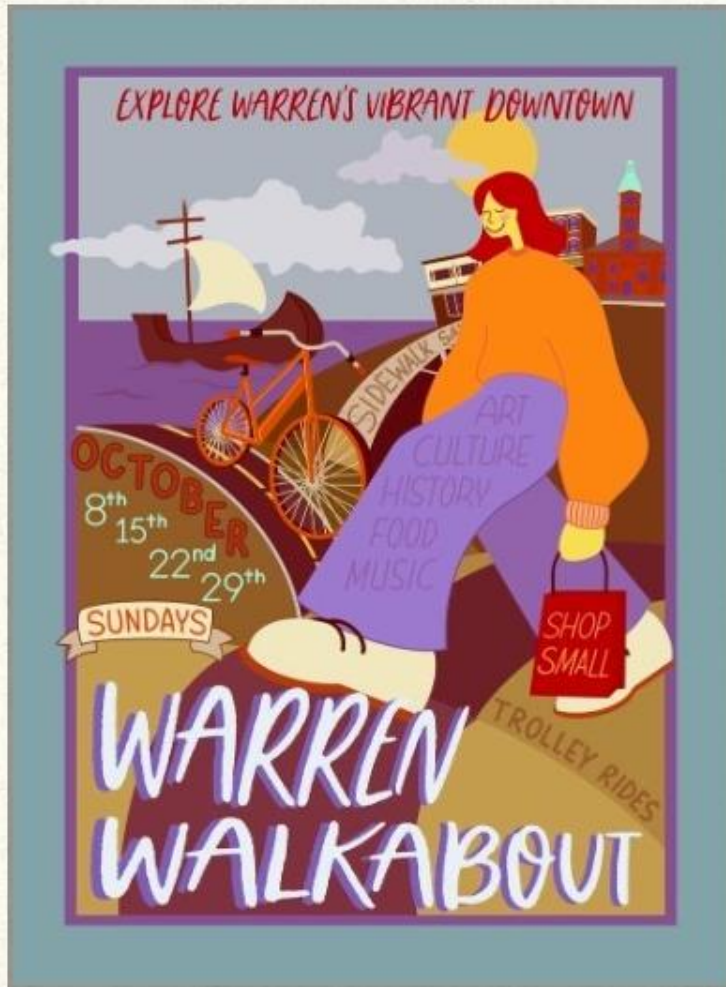
♥ art ♥ beer ♥ food ♥ music ♥ fun



OPEN NEWBURY STREET

Whether you're shopping, dining out, or just going for a walk, pedestrian-only days on Newbury Street are a Boston summer staple.

Warren Walkabout (October)





ALL ADVENTURES ☰

- ARTS
- AROUND TOWN
- EAT & DRINK
- SELF CARE
- SHOP
- HISTORY



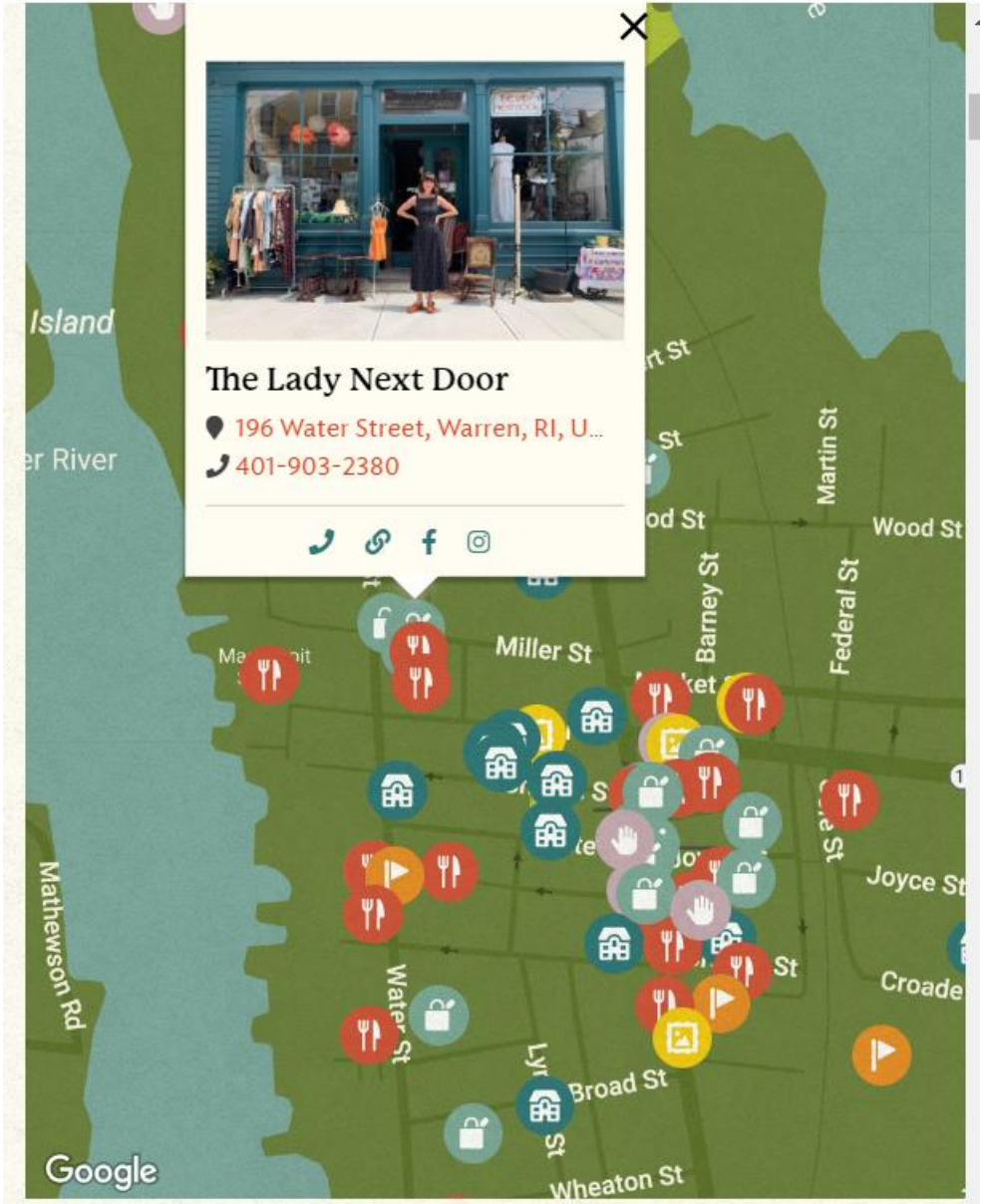
Carmen & Ginger Vintage Goods

18 Child Street



Tatters Handmade Clothing

324 Main Street





Downtown
Woonsocket
Collaborative

- Rein-dog Parade
- Entertainment
- Tree Decorating Contest
- Food Vendors
- Santa Claus Visit
- Scavenger Hunt

Join Us for the 15th Annual
WOONSOCKET-MAIN STREET
HOLIDAY
Stroll

Saturday 2 - 7 PM
December 2, 2023
Market Square to Lops Brewery









IT'S SCARECROWS SEASON IN PAWUXET VILLAGE



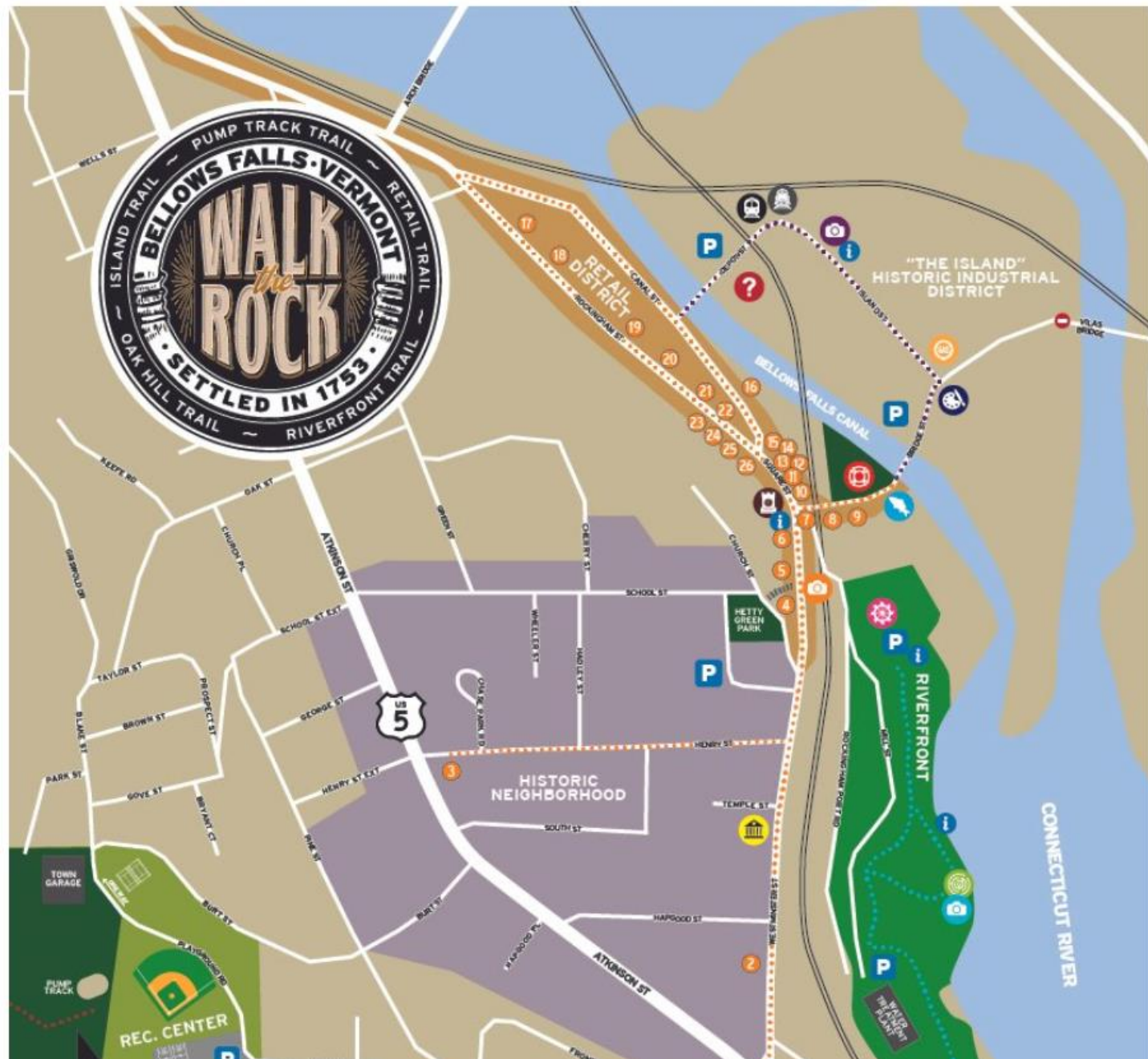
Community
Groups and
Pawtuxet
Village business:
Register and
claim your
lampost!



www.friendsofpawtuxetvillage.org

RETAIL TRAIL PASSPORT TO MORE PRIZES!

Look for a map at these participating retailers. Visit businesses for a stamp or signature and fill your passport to win more prizes!



- | | |
|---|---|
| 1 Kokopelli's LLC
Crystals, Sage, & SW Decor
4 Atkinson St - Open Tues - Sat | 14 Bellows Beats
Vinyl Records, CD's & Merch
2 The Square - Hours vary |
| 2 Athen's Pizza
Takeout & Dining Service
83 Westminister - Daily 11 - 11 (F-Sat til Mid) | 15 Sonya's Sassy Bling & Boutique
Consignment Clothing
2 The Square - Hours vary |
| 3 Bellows Falls Bike Project
Bike Shop & Bike Repair
30 Henry St - Closed Sun & Mon | 16 Canal Street Art Gallery
Art Gallery
23 Canal St - Open Wed - Sat 10 - 5 |
| 4 Jim's Arcade
Vintage & New Arcade
21 Westminister St - Open Daily 10 - 6 | 17 PK's Irish Pub
Draft Beer, Food, & Sunday Brunch
113 Rockingham St - Open Daily |
| 5 The Threaded Trunk Boutique
Women's Clothing & Gifts
29 Westminister St - Open Wed - Sat | 18 Pizza Palace
Breakfast, Lunch, & Dinner
111 Rockingham - S-M-8-4 Sat - 8-9 F-11-9 |
| 6 Little Art Supply Store
Artist Supplies
3 Westminister - Tues - Sun 10 - 5 (Fri til 6) | 19 Donovan's Bellows Falls
Irish Bar & Food (Lunch & Dinner)
65 Rockingham St - Open Thurs - Sun |
| 7 Flat Iron Cooperative
Consignment & Gift | 20 SEVCA Good Buy Store
Thrift Store |

Store Windows



kreatelier



WINDOW DISPLAYS

Create a scene and be the talk of the town!

First Impressions

Whether you're located on a busy street or in a pedestrian mall, your windows provide an amazing opportunity to:

- attract attention
- sell your brand
- send a message
- entertain
- inspire
- ultimately sell your products and services!

Are you making the most of your window real estate?



Our Displays Are Game-Changers

Window displays should work for you year-round, not just for the holidays. If you don't have the time or resources to design and maintain powerful window displays, we'll do it for you! Our talented display artists will get people talking and WOW customers before they even walk through your front door.

Window Display Services

- display planning
- prop fabrication/procurement
- graphics/signage
- lighting
- display installation
- display maintenance
- take down

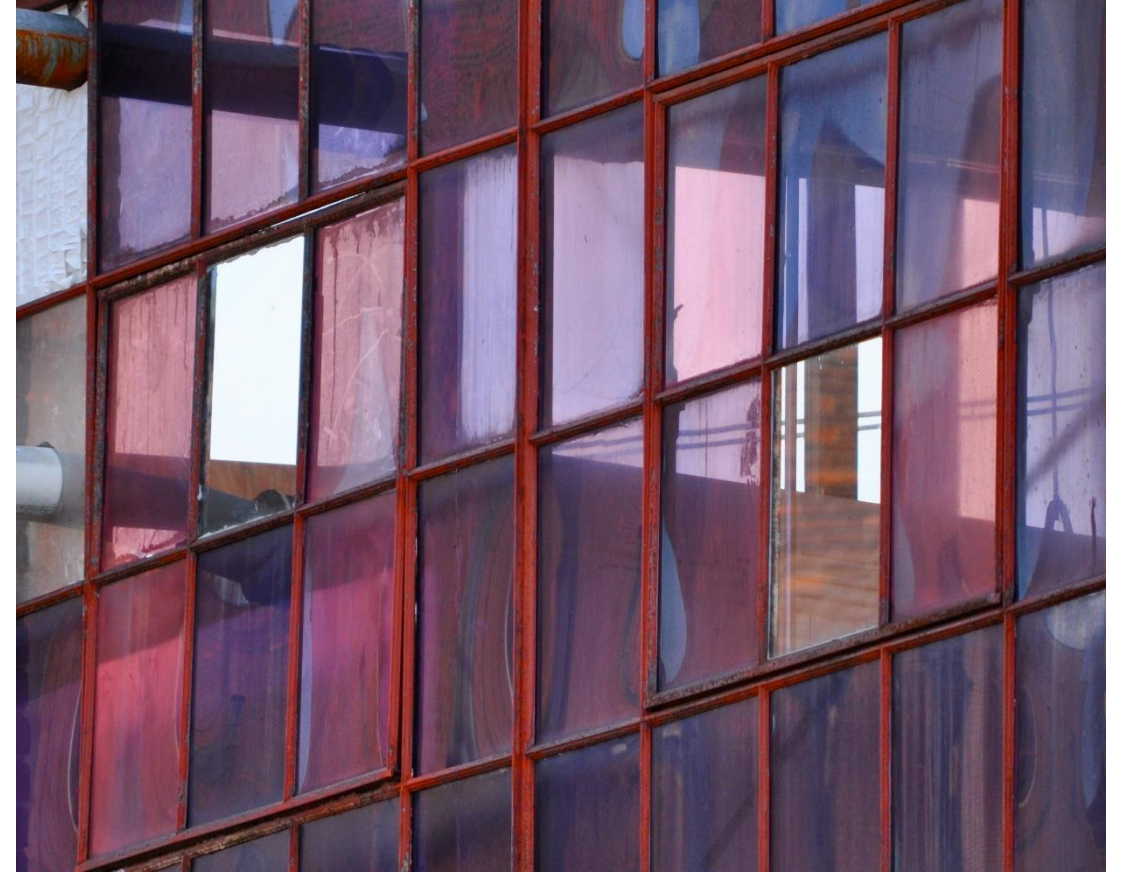
We can create a one-time display or seasonal displays (generally 5x/year).







Windows on Pawtucket







Albergott '20













Downtown Providence Parks Network

A photograph of the Lumina art installation at night. Several tall, narrow, illuminated panels are visible, each displaying vibrant, colorful patterns and abstract designs. The panels are set against a dark blue sky and silhouetted trees. A person is seen on the right side of the frame, interacting with one of the panels. The overall scene is illuminated by the colorful light from the panels.

LUMINA
Jan 19 to Feb 20, 2024





Murals – big and small





#AVENUEPVD

#TSTOGETHER

The Avenue Concept

About Us
Who Are We?

Built For
Who Are You?

The Mobile App
Guide Your Visitors

Tour Builder
Enterprise Features

Tours
Latest Tours

Sign Up
Get Started

Contact
Get In Touch

Login
Tour Builder

Razzle Dazzle by Dan O'Neill (2015)

The Avenue Concept South Side + West End Tour 2023

Home › United States › Rhode Island › Providence › The Avenue Concept South Side + West End Tour 2023 › Razzle Dazzle by Dan O'Neill (2015)

Razzle Dazzle by Dan O'Neill (2015)

Providence, Rhode Island 02906, United States

Created By: The Avenue Concept

Information

Location: 221 Broad St. - on the school campus

Razzle Dazzle is a mural installed by Dan O' Neill as part of a multi-artist series at the Classical High School in Providence. The lines, shapes, and shadows of Razzle Dazzle follow the rhythm of the school day. Similarly, the mural's color palette reflects a conscious choice to portray how sunlight and shadow affect color throughout the day. Inspired by the geometric "razzle dazzle" technique used to camouflage WWI battleships, O'Neill also used bright colors, light, and shadow to seemingly alter the shape of the building and ultimately impact the students' perspective of the space. O'Neill explains, "It's not a figurative mural with a specific political or social message, but a feeling that the space is here for you. To show students how this kind of brutalist, monochromatic concrete courtyard is really a canvas that's waiting for all this artwork to happen on it... That's what I wanted to get across with the act of painting it."



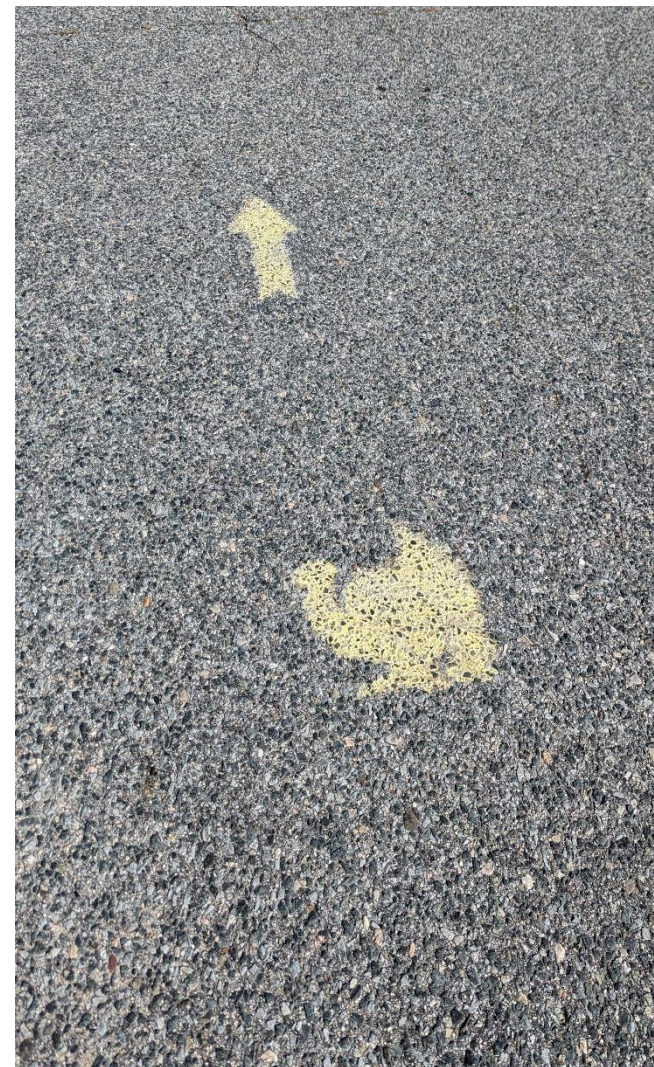
Razzle Dazzle by Dan O'Neill (2015)

Location

› Providence



Painted Routes



Signed Routes

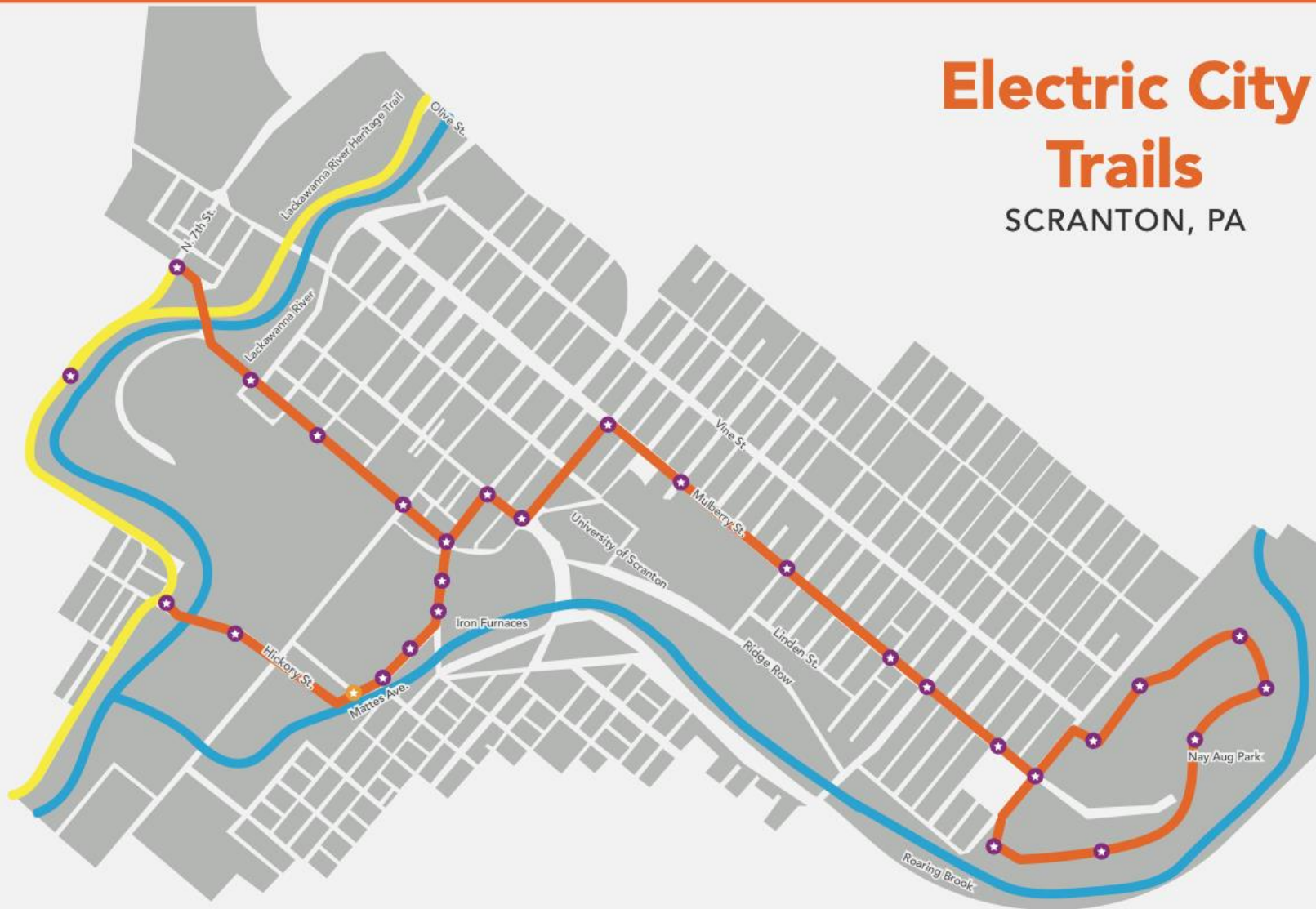


BALDWIN LOOP WALKING PATH BALDWIN LOOP SENDERO PEATONAL



Electric City Trails

SCRANTON, PA



WALKING PATH

-  Walking Paths
-  Trail Sign
-  Lackawanna River Heritage Trail
-  Mural Signs

























CALL FOR ARTISTS

beautility box murals

Apply by July 15, 11:00am.
← eastprovidenceri.gov/rfp

i Virtual info session and Q&A
Tuesday July 2 at 1:00pm.

a beautification project from the City of East Providence using ARPA funds to support local artists and restore pride









PERFORMANCE ANNEA

Arte en la Calle

Arte en la Calle



YOU GROW AS YOU AGE
YOU GAIN KNOWLEDGE AS
YOU PASS SCHOOLS
YOUR FAMILY GROWS
WITH YOU
Jacob W. Grade 4

My dad taught me how
to throw a football
Now I play with friends
Marti J. Grade 5

I USED TO BE WEAK
I CAN DO 15 PUSH UPS
I CAN STAY HUMBLE
Theron H. Grade 5

YOUR STRENGTH CAN
GROW STRONG
EXERCISING LIKE BIKING
TRY IT OUT TODAY
Aadam R. Grade 5

My LUNGS GROW
WITH BREATH
MY BRAIN GROWS
WITH MUCH KNOW
MY HEART GROW
WITH LOVE
Ivory H. Grade

My KINDNESS GROWS WHEN
I AM KIND TO SOMEONE
BEING KIND IS AWESOME
EGG
Journey S. Grade 4

Street Chalk Painting Festival





I heard St. Louis is...

St. Louis is LIT! #1 MOST VIOLENT CITY

St. Louis is Sabrina roberts

St. Louis is blue couch

St. Louis is So unwell

St. Louis is black smoke

St. Louis is the Gateway to the West

St. Louis is trying to learn HYPER BEAM
but ST LOUIS already knows four moves
Delete an other move to learn HYPER BEAM?

St. Louis is All about Busting a NUTS

St. Louis is the other side of the world

St. Louis is A GREAT PLACE

St. Louis is rainy

St. Louis is Off'

St. Louis is The Best

St. Louis is DOPE

St. Louis is AWESOME!

St. Louis is A FRENCH KING

St. Louis is Problematic

St. Louis is The Bee's Knees

St. Louis is En,ck RT

St. Louis is Complicat

St. Louis is Awesom

St. Louis is a possib

St. Louis is DOEZ

St. Louis is Paralyzed!
It May not af



NEVER LEART ST. LOUIS is this AWESOME!!

St. Louis is empty

St. Louis is trying to figure it out

St. Louis is Lonkey

St. Louis is a social construt

St. Louis is boring

St. Louis is CONFUSED! It May hurt it's soul in its comfort!

St. Louis is A Not Good Memory
And A Place I Made the most Important decision IN My Life

St. Louis is unsafe

St. Louis is For a time good call 411-PAIN

St. Louis is MY NEW HOME

St. Louis is TOASTED RAVS

St. Louis is SMOKED RIBS

St. Louis is a readhead

St. Louis is FAKE CHICAGO

St. Louis is mah boi!!!

St. Louis is DRY

St. Louis is an 11th century French King

St. Louis is choices

St. Louis is depressed

And to me, St. Louis is...

St. Louis is Hansen temporary

St. Louis is RED BRICKS

St. Louis is Relay for Life 4/7

St. Louis is 234

St. Louis is HOME

St. Louis is HALF URBAN HALF RURAL

St. Louis is deeply troubled but endlessly interesting

St. Louis is Cardinal Nation

St. Louis is FUN

St. Louis is The Best at sports

St. Louis is WHERE MY HEART IS

St. Louis is depressing

St. Louis is John Klein

St. Louis is 3rd

St. Louis is WHERE MY HEART IS

St. Louis is in Missouri

St. Louis is Scottie all Midwestern

St. Louis is City of unstable weather

St. Louis is WET -ther

St. Louis is Home Sweet Home

St. Louis is Pad a Hoke town

St. Louis is throwing SACKS

St. Louis is mastering the RSD

St. Louis is also DOPE

St. Louis is @moody

